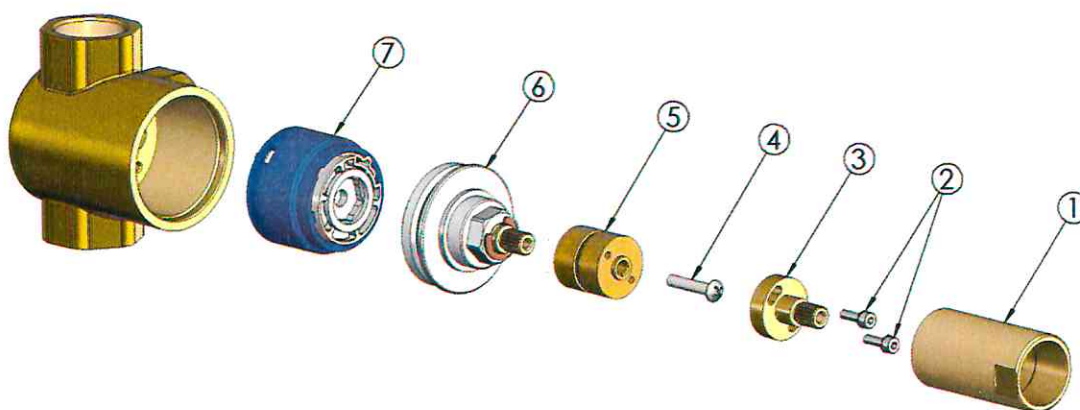


## REPLACEMENT OF THE DIVERTING CARTRIDGE

Before proceeding with the maintenance of the cartridge, remove the handles and the cover plate.

Follow the instructions shown in section "HANDLE REMOVAL" at page 14 of the instructions booklet provided with the product.

- 1) Remove the handle and the cover plate, then close the water inlets.
- 2) Unscrew the threaded rod (1), the screws (2) and remove the broached insert (3).
- 3) Remove the screw (4) and the brass insert (5).
- 4) Unscrew the flange (6) anti-clockwise.
- 5) Remove the blue diverting cartridge (7).



- 6) Before insert the new cartridge, clean and grease carefully the inner seat of the housing.
- 7) Insert the cartridge adaptor (9), paying attention not to lose the shaped O-ring (8).
- 8) Insert the centering adaptor (11) and paying attention not to lose the O-ring (10).
- 9) Place the new cartridge (12) and fix it with the flange (13).
- 10) Screw the threaded rod (14) on the flange (13).
- 11) Once the new cartridge is installed check for any leak.

